



WISCONSIN SOCIETY OF GASTROENTEROLOGY NURSES AND ASSOCIATES

# NEWSLETTER

Winter 2010

*It is a 'first' for WSGNA... a satellite conference!*



*Joey Buona's Restaurant*  
500 N. Water St., Milwaukee,

## *Learning Made More Accessible*

*Saturday, March 13, 2010*  
*0800 -1230*

To all of our GI colleagues! Join us for our 1<sup>st</sup> satellite conference. Brochures and registration forms were emailed last week. Please share with your friends, members and non-members. The program will be broadcast live from Milwaukee and shown in Green



*Bellin Hospital*  
*Kresge Center*  
*Green Bay*  
*Bellin Hospital*  
*Kresge Center*  
744 S. Webster St., Green Bay

Bay. See registration form in this newsletter or email any board member with questions. Scholarship applications for this mini conference (6 @ 75.00 each) are in newsletter. Registration and scholarship application due March 1. There is still lots of time to take advantage of this wonderful opportunity!

**CONGRATULATIONS TO TERRIE VOS** on nearing the end of a successful year as SGNA President.

**GOOD LUCK PEGGY GAUTHIER** as you take over the SGNA Presidency in May.

**WSGNA IS PROUD OF YOUR ACCOMPLISHMENTS!**

### ***In this Issue:***

- 1st WSGNA Satellite Conference*
- Congrats to Terrie and Peggy*
- Upcoming Conferences*
- President's Letter*
- Thank You Note from Childrens's*
- BOD information*
- Super Colon at Riverwoods*
- GI Nurses Day*
- Department Spotlight—CSM*
- Scholarship Information/Application*
- WSGNA Mini Conference/Registration*

## *Upcoming Conferences*



**March 13, 2010 -**  
**WSGNA Spring Mini Conference**



**April 30 – May 5, 2010 -**  
**SGNA Annual Course—Orlando**

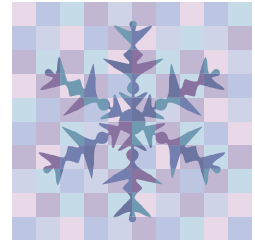


**Nov. 5-6, 2010 –**  
**WSGNA Fall meeting—LaCrosse**



**October 2010 –**  
**Multi Regional—Chicago**

## PRESIDENT'S MESSAGE



*Dear Wisconsin SGNA members,*

*As this new year starts and my presidency begins, I would like to take this opportunity to acknowledge the talent, support and passion of our outgoing president, Mary Fiebelkorn. Time and space doesn't permit me to mention all her initiatives, but I will note a few. She worked tirelessly on the unenviable task of revising and updating our policies, procedures, and bylaws. Mary was also instrumental in our website "makeover". And all the while she was busy with these pursuits, she helped organize conferences, worked to grow our organization, and mentor new officers-myself included. Needless to say, her leadership these last two years has been invaluable.*

*I've also been fortunate to learn from an experienced and energetic board of directors. Their dedication to WSGNA is second to none. I look forward to working with them as we continue to bring educational and networking opportunities to our members.*

*As we have been blessed on a state level, so too have we been fortunate at a national level. Although our current National President, Theresa Vos, has five months to serve, I would like to express our gratitude for her work. Our National President-Elect, Peggy Gauthier, faces many new challenges. We in Wisconsin wish her well and look forward to working collaboratively with our national headquarters in Chicago.*

*Now, I would like to take a few minutes to talk about what we, on the Board, would like to accomplish in the upcoming year in Wisconsin. In a general sense, we would like to continue working toward having WSGNA become more dynamic. To achieve this goal, we're going to try something innovative; i.e. a simultaneous educational web broadcast from Milwaukee to Green Bay on March 13th. We want to make professional education more accessible and convenient for our members. This will be followed by an educational conference hosted by La Crosse members on November 5th and 6th. I hope that you can attend. These are only a sample of WSGNA goals and projects.*

*Our overriding goal, as always, is to increase member participation in the organization. The Board believes the vibrancy of WSGNA is directly proportional to member participation and feedback. Then we invite you to take this communication one step further by contributing to our newsletter.*

*I am confident in the upcoming year that WSGNA will grow as potential members learn of the opportunities we provide for charitable activity, professional growth, employment, networking, and collegial support.*

*Yours truly,  
Margaret Hauser-Ullman, RN, CGRN  
WSGNA President*

## WELCOME

### Welcome to our newest Board Member- Casey Fisher

*Hello, my name is Casey Fisher and I am your Director at Large- Membership/Nominations of the WSGNA.*



*I have been a member of SGNA for 4 years and have loved every minute of it. I have worked in the field of GI since 2005 and once I became an RN in 2006, I knew that I was destined to stay in this great field. Each day I learn something new about our specialty and try to teach others about my passion for what I do. I am also currently attending the University of Wisconsin Milwaukee for my Nurse Practitioner's Degree. I will graduate in May 2010 and will stay working in the field of GI.*

*I believe that I will be a great addition to WSGNA because of my enthusiasm and overall love for our specialty, as well as my passion for continual learning and growth. As your new Director—at-Large, I will work hard to share this passion with others and help build upon the foundation of this great organization.*

### 2010 WSGNA Board of Directors

#### President

Margaret Ullman, RN, CGRN  
Columbia-St. Mary's  
Columbia & Riverwoods GI Lab  
262-284-2761  
[ullmanmargaret@yahoo.com](mailto:ullmanmargaret@yahoo.com)

#### President-Elect

Lynn Miller, BSN, RN, CGRN  
Columbia-St. Mary's GI Lab  
414-228-8067  
[lmiller@columbiastmarys.org](mailto:lmiller@columbiastmarys.org)

#### Secretary

Sheila Gansemer, RN  
Director - Outpatient Services;  
Wheaton-Franciscan-St. Francis  
414-423-6905  
[rgansemer@wi.rr.com](mailto:rgansemer@wi.rr.com)

#### Treasurer

Christine Crevcoure, RN, CGRN  
Bellin Hospital, Digestive Health Services Unit  
920-339-9918  
[ccrevcoure@yahoo.com](mailto:ccrevcoure@yahoo.com)

#### Director-at-Large ~ Membership/Nominations

Casey Fisher BSN RN  
Columbia-St. Mary's  
GI Lab  
[CJKit10@wi.rr.com](mailto:CJKit10@wi.rr.com)

#### Director-at-Large ~ Communications/Newsletter

Cathy Johnson, RN, CGRN  
Waukesha Memorial Hospital GI Center  
262-544-0157  
[casjohnson3@sbcglobal.net](mailto:casjohnson3@sbcglobal.net)

#### Immediate Past-President

Mary Fiebelkorn, BSN, RN, CGRN  
Manager - GI Center;  
Waukesha Mem Hospital  
262-928-7614  
[mary.fiebelkorn@phci.org](mailto:mary.fiebelkorn@phci.org)

*Thank You*



*Thank You .....*

Following is a letter received from Children's Hospital thanking us for support.

*"Dear Margaret,  
With warm appreciation I would like to thank you and the Wisconsin society of Gastroenterology Nurses and Associates for your thoughtful gift of \$1,500 to support the Bonnie Lynn Mechanic Celiac Clinic at Children's Hospital and Health System. We are truly grateful for your support for the past two years,*

*Contributions such as yours enable doctors, nurses, scientists, child advocates, and health educators to find ways to keep kids healthy and safe.....*

*...Thank you again for your strong belief in the power of philanthropy, and especially for your strong belief and investment in Children's..."*

*Rhonda Plotkin  
Development Director*

## LETTER FROM A SCHOLARSHIP RECIPIENT



I'd like to take this opportunity to thank WSGNA for the scholarship for the Spring 2009 Conference in Green Bay. I'm sorry that it has taken me so long to write this note but many unforeseen events these past few months have required my attention elsewhere. (Add to that the fact that I just can't stand to sit at a computer and type away!).

The Conference organizers did an excellent job of offering some great and varied subjects that were very informative and useful. It was especially good since it has been a few months and I still can vividly remember the speakers. The Celiac presentation given by the Chef was very helpful since it is not often we have this information available to us in this format. As we are now seeing more patients with Celiac Disease in our department I can share this information with these patients to make this aspect of their life more pleasant for them. Also in my practice I'm seeing more Barrett's Esophagus patients, so the ablation presentation was also most helpful and informative to me.

Again, I'd like to thank WSGNA for their generosity in granting me this educational scholarship to this excellent educational offering. I encourage my fellow WSGNA members to apply for these scholarships and reap the benefits available to active members. Ursula Lackey RN

## GI NURSES DAY IS WEDNESDAY, MARCH 24



Planning for GI Nurses day is underway in Wisconsin. WSGNA will support the 4 quadrants of our state with \$750.00 for an educational celebration. If anyone is interested in planning an event for your area, let any board member know. Past events have included speakers with dinner and door prizes. Talk with your sales, drug reps—some may have ideas and will be interested in helping your area celebrate GI nursing.

## LEGISLATIVE INFORMATION

Dear Members,

There is currently a bill in the Wisconsin legislature introduced as the Restroom Access Act, bill number 709, also known as Ally's Law: <http://www.legis.state.wi.us/2009/data/AB-709.pdf>.

*"This bill requires a retail establishment that has a toilet facility that is designated for use by employees to allow a person who has a certain type of medical condition, or who uses an ostomy device, to use the employees' toilet facility under certain conditions..." (to read more; go to the above link.)*

This bill is sponsored by State Representative Karl Van Roy from Green Bay. If this is something you would like to support, then I encourage you to contact your state representative. If you do not know who your representative is, you can find that out by visiting this website:

<http://www.legis.wisconsin.gov/w3asp/waml/waml.aspx>



## DEPARTMENT SPOTLIGHT



### DEPARTMENT SPOTLIGHT is on:

Columbia-St. Mary's  
River Woods Campus  
Columbia Campus

Writing this spotlight has been a challenging and enjoyable process. I work for Columbia-St. Mary's (CSM), which provides GI care via three hospitals: Milwaukee, Columbia, and Ozaukee Campuses and one ambulatory center : River Woods. Within this system, I work with the unit that provides care at the River Woods and Columbia campuses.

Our staff is comprised of twelve nurses, two endotechs, and three schedulers. We offer the full array of GI services, i.e. colonoscopies, EGD's, ERCP's, pill cam studies, Peg tube insertions, bronchoscopy, and endoscopic ultrasound. At River Woods, we have four procedure rooms, while at Columbia, there are two. We see approximately 350 patients per month at these two campuses. We work with 10 plus physicians on a regular basis. In fall of 2010, the Columbia campus will close and a new Columbia-St. Mary's hospital will take over the provision of inpatient and outpatient GI services for Milwaukee's east side.

We provide great care because our staff is strong. Four of our nurses are certified in GI and four are SGNA members. Both of our endotechs work full time and are attending nursing school. We have two nurses who provide education for our unit. All of our nurses are ACLS certified and two nurses are ACLS instructors. Because of our mutual respect (personally and professionally), cohesiveness, and frequent visits to our favorite south side Mexican restaurant, we were able to work through our biggest challenge: providing services to two GI Labs.

Along with direct patient care, our staff has made a commitment to community outreach and education. In September 2009, we hosted the "Prevent Cancer Super Colon" exhibit. As you can see in the photos in this newsletter, it was a nice blend of education and fun. I'm proud to work with a seasoned group of professionals, who collectively have 187 years of GI experience! We take great pride in enhancing our skills and knowledge to ensure top quality patient care.

Submitted by:  
Margaret Hauser-Ullman RN CGRN  
WSGNA President

*P.S. I encourage you to tell us about your department! Please complete a "department spotlight" and submit it to Cathy Johnson for a future newsletter.*



## DEPARTMENT SPOTLIGHT

Please consider writing about your department and submit to me at [casjohnson3@yahoo.com](mailto:casjohnson3@yahoo.com). If you prefer you may use the questionnaire below. Thanks, Cathy Johnson

### WSGNA INVITES YOU TO PARTICIPATE IN "DEPARTMENT SPOTLIGHT"

WSGNA is looking for Newsletter spots about YOU! We'd like to hear about your GI department. How big is it? How busy? How many staff members do you have? What do you do to "WOW" your patients? How do you celebrate success? What makes your GI department special? And anything else you would like to say!!

We'd like our members to know more about their peers. You don't have to be an author to submit your story. We can write it for you if you like. Here are some questions to start with. Just answer and we'll do the rest.

Name of GI department: \_\_\_\_\_

Name of person submitting \_\_\_\_\_

How can we contact you? \_\_\_\_\_

How old is your department? \_\_\_\_\_

How many patients do you see (per week, month, whatever) \_\_\_\_\_

How many procedure rooms do you have? \_\_\_\_\_

What is your staff mix (RNs, Techs, clerks, processing tech, etc.)? \_\_\_\_\_

How many of your staff are certified? \_\_\_\_\_

How many are WSGNA members \_\_\_\_\_

What is your patient mix (EGD, colon, bronch, etc.)? \_\_\_\_\_

Do you do any special procedures (manometry, EUS, pH, etc.)? \_\_\_\_\_

What do you do to celebrate successes? The department's, an individual's, GI Nurses Day, etc. \_\_\_\_\_

Would you like to recognize someone in your department for their extraordinary efforts, work, or a special accomplishment? \_\_\_\_\_

What is your department most proud of? \_\_\_\_\_

What is your department's biggest challenge? (Perhaps someone who reads this has the same issue and can help! \_\_\_\_\_

What do you feel makes your department special or different from other GI departments? \_\_\_\_\_

Do you have a customer service story that you would like to share? \_\_\_\_\_

Do you have any pictures that you'd like to put in the newsletter? \_\_\_\_\_

Anything else?? Anything at all? \_\_\_\_\_

That's it. You've done it!

Send your notes/comments to:

Cathy Johnson at [casjohnson3@yahoo.com](mailto:casjohnson3@yahoo.com) or fax to 262-928-4669 Att: Cathy

## SCHOLARSHIPS

**WSGNA Spring Scholarships for mini conference and National course are due on March 1!** Monies will be paid upon receipt of attendance. Winners of the scholarships will be notified by March 15. Use the scholarship form below or on the website to apply for the scholarships. The completed forms are to be submitted to the current Director at Large-Membership/Nominations, Casey Fischer. You can email her or FAX to her attention at 1-414-291-1177. Feel free to email any board member with questions. ***Because the regional spring course is a "mini" half day event - 6 (SIX) \$75 scholarships will be awarded.***

### WSGNA Educational Scholarship Application (Spring)

WSGNA Educational Scholarships have been established to financially assist WSGNA members in attending SGNA/WSGNA educational courses. Scholarships will be awarded as outlined in the scholarship policy and procedure.

Name \_\_\_\_\_ Date \_\_\_\_\_

Address \_\_\_\_\_ Member since \_\_\_\_\_

City \_\_\_\_\_ State \_\_\_\_\_ Zip \_\_\_\_\_

Phone \_\_\_\_\_ Email address \_\_\_\_\_

Title \_\_\_\_\_ Position \_\_\_\_\_

How long have you been a GI Nurse/associate? \_\_\_\_\_

Are/Have you been involved in GI Nursing in your hospital/community/state/regional or national organization?

Have you ever received a WSGNA scholarship before? When? \_\_\_\_\_

What would a scholarship mean to you; any special considerations? \_\_\_\_\_

The number of scholarships and the amount of each scholarship granted will be determined by the Board of Directors and Scholarship Committee in December of each year.

Please indicate below which course you are applying for:

**(The application deadline for the following scholarships is March 1 of the year to be awarded)**

\_\_\_\_ WSGNA Spring "mini" Education Course

\_\_\_\_ SGNA Annual Course

\_\_\_\_ Certification/ \_\_\_\_ Recertification – 2 each (selected in September)

#### Selection criteria:

\*\*A member of WSGNA for one year or more as of January 1st of the year you are seeking the scholarship.

\*\*Currently working in the field of GI.

The monies for the scholarship will be reimbursed upon the submission of a copy of your contact hour certificate, a brief synopsis of your experience at the educational course and how attending enhanced your professional career. This is due within 30 days of attendance and will be published in the newsletter.

Contact any board member if you have questions.

**Submit to: Director at Large, Nominations and Membership**

Revised 11/08

## SPRING REGIONAL MINI CONFERENCE

### 1st WSGNA Satellite Conference (Learning Made More Accessible) March 13, 2010 0800 -1230



#### Joey Buona's Restaurant

500 N. Water St.  
Milwaukee, WI

and

#### Bellin Hospital

Kresge Center  
744 S. Webster  
Green Bay, WI



3.25 Contact Hours will be awarded for successful completion of this program. Columbia-St Mary's is an approved provider of continuing nursing education by the Wisconsin Nurses Association, an accredited approver by the American Credentialing Center's Commission on Accreditation. Successful completion of this program requires that the participant be present for all presentations offered and complete an evaluation.



#### Green Bay Attractions

Lambeau Field Tours  
Packer Football  
Hall of Fame  
Shopping



#### Enjoy Milwaukee after the Morning Conference:

Milwaukee Lakefront  
(Innle)  
Calatrava Art Museum  
Harley Museum  
Mitchell Park Domes  
Shopping in Third Ward  
Milwaukee Public Market

### Program

- 8:00 to 8:50 Registration / Breakfast/Vendor Visit
- 8:50 Welcome
- 9:00 to 10:30 Advanced Treatment of Barrett's Esophagus – HALO and Other Options  
Jeffrey Schenck MD, Gastroenterologist  
Madison Medical Affiliates
- 10:30 to 12:00 Introduction to Endoscopy, Diagnostic and Interventional  
Vasanth Siddalingaiah MD, Gastroenterologist, Aurora Advanced Healthcare
- 12:00 to 12:15 Wrap up, evaluations, CEU's

**Members \$50.00/Non-members \$75.00**

Conference will be live in Milwaukee, with a satellite feed to Bellin Hospital in Green Bay

#### Planning Committee:

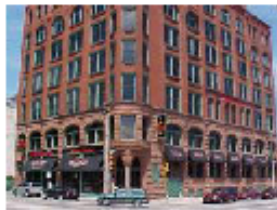
Lynn Millar, BSN, RN, CGRN  
Margaret Hanser-Ullman, RN, CGRN  
Mary Fiobelkorn, BSN, RN, CGRN  
Cathy Johnson, RN, CGRN  
Chris Creucoara, RN, CGRN

#### Faculty:

Jeffrey Schenck, MD  
Gastroenterologist, Madison Medical Affiliates  
Vasanth Siddalingaiah, MD  
Gastroenterologist Aurora Advanced Healthcare

**Target Audience:** RN's, LPN's, and GI Associates who practice in the field of gastroenterology, for those in CAP or anyone interested in further education related to gastroenterology. This course will provide the latest evidence-based practices on various topics pertinent to the changing field of gastroenterology nursing.

## SPRING REGIONAL MINI CONFERENCE REGISTRATION FORM



*Milwaukee*



*Green Bay*

*1st WSGNA Satellite Conference  
(Learning Made More Accessible)  
March 13, 2010  
0800 -1230*

### Registration for WSGNA mini conference

Name \_\_\_\_\_

Address \_\_\_\_\_

Employer \_\_\_\_\_

Email address (for confirmation email) \_\_\_\_\_

WSGNA Member    Yes \_\_\_\_\_    No \_\_\_\_\_

Location attending:    Milwaukee \_\_\_\_\_    Green Bay \_\_\_\_\_

Fee enclosed:    Member \$50.00 \_\_\_\_\_    Non-Member \$75.00 \_\_\_\_\_

**Registration Deadline: March 1, 2010**  
**(Make checks payable to WSGNA)**

**Mail to: Margaret Hauser – Ullman**  
**3559 E. Norport Dr.**  
**Port Washington, WI 53074**

*Due to the fact there is no Spring Conference,  
Six (6) - \$75.00 scholarships will be awarded to this mini-conference  
Download scholarship application from [www.wsgna.org](http://www.wsgna.org) or use  
Scholarship form in this newsletter and submit by March 1st to:  
Casey Fischer, [CJKit10@wi.rr.com](mailto:CJKit10@wi.rr.com)  
Or fax to 1-414-291-1177 (attention Casey Fischer)*

## IN THE NEWS...

## Super Colon Attraction at River Woods

Columbia St. Mary's featured ***The Prevent Cancer Super Colon™*** exhibit at River Woods, Milwaukee on Saturday, September 26, 2009. More than 35 employees of Columbia St. Mary's and Madison Medical Affiliates volunteered to work at the event, and over 200 people from the general public attended. This twenty-foot long, eight-foot high, 450-pound exhibit is a replica of a human colon.



While strolling through the colon, visitors were able to get a close-up look at healthy tissue, colon polyps, various stages of colorectal cancer and diseases such as Crohn's and colitis. The day's activities also included tours of the GI lab, a procedure video of a colonoscopy, and other informational exhibits. In addition, take-home colon cancer tests were available to those who wanted to be screened.



Visit us at  
[www.wsgna.org](http://www.wsgna.org)